



Certificate of Analysis

CANNABUSINESS LABORATORIES, LLC

Customer:
Relief Buddies
2525 Pleasant Ave

Hamilton, OH 45015

Received Date **9/7/2022**
COA Released **9/8/2022**

Comments

Sample ID **220906009**
Order Number **CB220906005**
Sample Name **Watermelon Zkittlez Full Spectrum Oil**

External Sample ID

Batch Number
Product Type **Edible**
Sample Type **Edible**

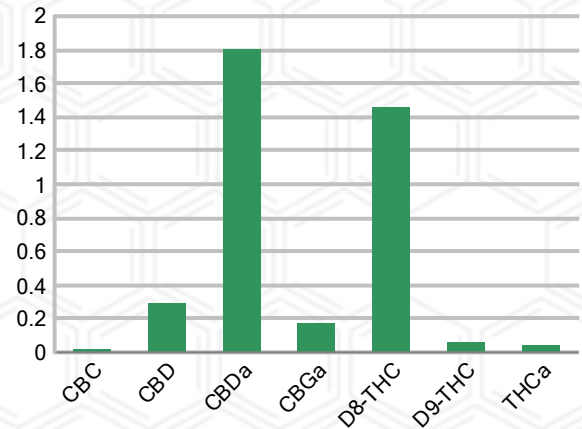
CANNABINOID PROFILE (Product Size = 1 mL)

Analyte	LOQ (%)	% Weight	mg/mL	mL/serving
CBC	0.01	0.021	0.197	0.20
CBD	0.01	0.292	2.716	2.72
CBDa	0.01	1.806	16.80	16.80
CBDV	0.01	ND	ND	ND
CBG	0.01	ND	ND	ND
CBGa	0.01	0.171	1.589	1.59
CBN	0.01	ND	ND	ND
d8-THC	0.01	1.460	13.58	13.58
d9-THC	0.01	0.063	0.587	0.59
THCa	0.01	0.044	0.407	0.41
Total Cannabinoids		3.857	35.87	35.87
Total Potential THC		0.102	0.945	0.95
Total Potential CBD		1.876	17.45	17.45
Total Potential CBG		0.150	1.395	1.40
Ratio of Total Potential CBD to Total Potential THC				18.39 : 1
Ratio of Total Potential CBG to Total Potential THC				1.47 : 1

SAMPLE IMAGE



CANNABINOIDS % Weight



*Total Cannabinoids refers to the sum of all cannabinoids detected.

*Total Potential CBD = (0.877 x CBDa) + CBD. *Total Potential THC = (0.877 x THCa) + THC. *Total Potential CBG = (0.877 x CBGa) + CBG.

*Total Potential THC/CBD are calculated to take into account the loss of an acid group during decarboxylation.



J. Hobgood
Laboratory Manager
SIGNATURE

Jamie Hobgood
LABORATORY MANAGER

09/08/2022 2:11 PM
DATE

This product has been tested by CannaBusiness Laboratories using validated testing methodologies and a quality system. Values reported relate only to the product tested. CannaBusiness Laboratories makes no claims as to the efficacy, safety, or other risks associated with any detected or non-detected levels of any compounds reported herein. This Certificate shall not be reproduced except in full, without the written permission of CannaBusiness Laboratories. Photo is of sample received by the lab and may vary from final packaging. The results apply to the sample as received.



Certificate of Analysis

CANNABUSINESS LABORATORIES, LLC

Customer

Relief Buddies
2525 Pleasant Ave
Hamilton, OH 45015



Overall Batch Results	
Pesticide	Moisture Content
Potency	Water Activity
Mycotoxins	Heavy Metals
Microbial Screen	Residual Solvents
Terpenoids	

Sample Name: Watermelon Zkittlez Full Spectrum Oil

Sample ID: 220906009

Order Number: CB220906005

Product Type: Edible

Sample Type: Edible

Received Date: 09/07/2022

Batch Number:

COA released: 09/08/2022 2:11 PM

Potency (mg/mL)

Date Tested: 09/07/2022

Method: CB-SOP-028

Instrument:

0.102 % Total THC	1.876 % Total CBD	3.857 % Total Cannabinoids	35.87 mg/mL Total Cannabinoids
-----------------------------	-----------------------------	--------------------------------------	--

Analyte	Result	Units	LOQ	Result	Units
CBC (Cannabichromene)	0.021	%	0.010	0.197	mg/mL
CBD (Cannabidiol)	0.292	%	0.010	2.716	mg/mL
CBDa (Cannabidiolic Acid)	1.806	%	0.010	16.80	mg/mL
CBDV (Cannabidivarin)	ND	%	0.010	ND	mg/mL
CBG (Cannabigerol)	ND	%	0.010	ND	mg/mL
CBGa (Cannabigerolic Acid)	0.171	%	0.010	1.589	mg/mL
CBN (Cannabinol)	ND	%	0.010	ND	mg/mL
D8-THC (D8-Tetrahydrocannabinol)	1.460	%	0.010	13.58	mg/mL
D9-THC (D9-Tetrahydrocannabinol)	0.063	%	0.010	0.587	mg/mL
THCa (Tetrahydrocannabinolic Acid)	0.044	%	0.010	0.407	mg/mL



J. Hobgood
Laboratory Manager

Jamie Hobgood

09/08/2022 2:11 PM

SIGNATURE

DATE

NT = Not tested, ND = Not detected; LOQ = Limit of Quantitation; <LOQ = Detected; >ULOL = Above upper limit of linearity; CFU/g = Colony forming units per 1 gram; TNTC = Too numerous to count

This product has been tested by CannaBusiness Laboratories using validated testing methodologies and a quality system. Values reported relate only to the product tested. CannaBusiness Laboratories makes no claims as to the efficacy, safety, or other risks associated with any detected or non-detected levels of any compounds reported herein. This Certificate shall not be reproduced except in full, without the written permission of CannaBusiness Laboratories. Photo is of sample received by the lab and may vary from final packaging. The results apply to the sample as received.